

### Entuity Eye of the Storm 4.5

**Summary:** Complete information about your enterprise is available with this package that wins our Editor's Choice Award for performance and functionality.

**Price:** \$50,000



There are many software packages available to today that are able to provide a wealth of information about a computer system. Some of them even perform diagnostics that can fine tune the machine for fastest performance. There are also other products that can search a corporate network for the listing of attached systems but none of them provide performance metrics. The Entuity Eye of the Storm Version 4.5 software is capable of measuring these appliances and it receives our Editor's Choice Award for performance and functionality.

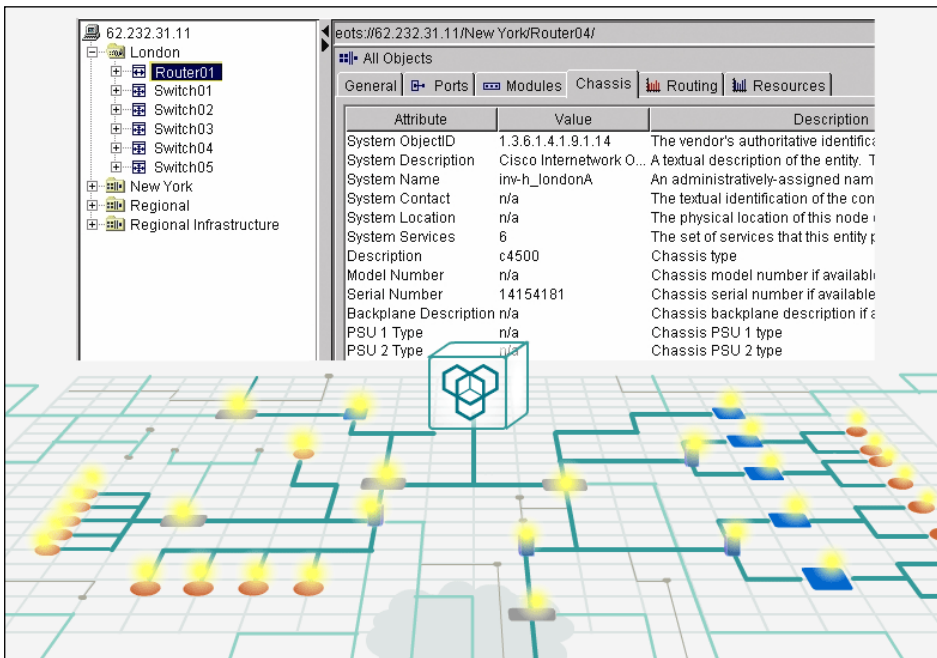
Entuity offers two different licenses with this product and one of them can be used for due diligence reporting of the network environment. The SAV license is granted for a one time inventory and audit of the network's appliances and devices as well as the performance of these products. With this information available, corporate decision makers can take a look at the

## Data can exported to XML, CSV, HTML and PDF formatted files

changes that are necessary to reach an optimum in network performance. On the other hand, the full EYE license provides administrators with a current and historical view of the environment to search for anomalies within the system. Eye of the Storm 4.5 can operate on systems that use the Microsoft Windows 2003 Server, Sun Solaris or Red Hat Linux operating system.

The software package's EYE's Topology and Asset Navigator uses a

store historical data that is retrieved by the Eye of the Storm 4.5 application. Administrators can use this data to take a look at network appliance performance over a certain period of time which is a great tool to use when performance issues are encountered and can be used to detect early failure of an appliance used in the environment. EYE also provides dozens of reports that are perfect for corporate management that can be exported to XML, CSV, HTML and PDF formatted files.



If you're looking for a product that can provide the most comprehensive information about your entire enterprise network then check out Entuity's Eye of the Storm Version 4.5 software package that costs approximately \$50,000. You can locate more information as well as an informative flash video on the company's web site which is located at [www.entuity.com](http://www.entuity.com).

TreeView drilldown feature that allows administrators look at logical and physical connections between Layer 2 and Layer 3 applications or elements in a real-time view. You'll be able to retrieve information about the various switches, routers, hubs, VLANs, servers and ports that are used in the network environment. This data can be exported for use with Microsoft's Visio 2000 and 2003 diagramming program.

The company's (CMDB) configuration management database is used to

