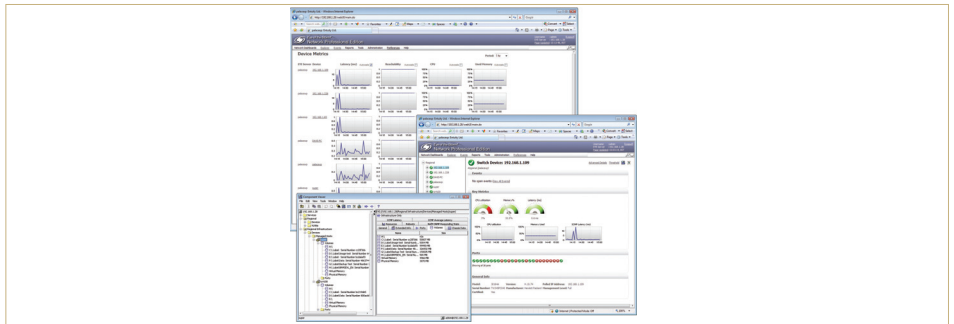


EYE Network Professional Edition from Entuity



PRODUCT REVIEW PRODUCT REVIEW PRODUCT REVIEW

Entuity has traditionally focused on managing enterprise networks and its Eye Of The Storm (EYE) has consistently delivered a powerful solution for network analysis, device monitoring, problem remediation and inventory. Now mid-sized businesses can take advantage of these capabilities, as the latest EYE Network Professional Edition (NPE) offers an affordable enterprise level network management product, all based on an important subset of these features.

NPE won't have any problems with mid-sized networks as it can handle up to 150 network devices and 7,500 managed objects. It's designed to provide a more simplified view of the network and it comes with sets of predefined event and inventory reports. EYE supports an unlimited number of managed objects and also offers a greater range of customisable reports. Another feature not present in NPE is Entuity's Green IT Perspective power monitoring tools.

NPE adheres to the same agent-less discovery process as EYE and so deployment is a very simple process. We loaded NPE on a Windows XP SP2 system and had it up and running inside fifteen minutes. Licensing requires a unique ID to be generated for the host system, and once we'd emailed it to Entuity we had a license code back in ten minutes.

You get the same smart web console as EYE,

which opens with a dashboard offering graphical overviews of the entire network, along with events and warnings. Discovery routines need to be configured and these can be run on-demand and also scheduled for specific days. It didn't take long for NPE to check the lab network out, at which point it promptly populated its database with details of all our switches, servers and client systems.

From the networks dashboard option you can peruse a list of all discovered devices, and selecting any one allows you to drill down deeper to see more performance details. For fully managed SNMP devices, NPE provides graphs and charts showing latency, availability, and utilisation of their memory and processors. The Device Metrics feature offers a useful screen as you can view performance graphs of multiple systems, and decide which ones from the inventory you want to be included.

NPE also identifies how devices are interconnected and it builds maps showing their relationships with each other. As it gathers real-time performance data from each device, it can also pinpoint problem areas and provide timely alerts. NPE doesn't just alert you to problems irrespective of their type, but it helps to identify the root cause and the impact that it's likely to have on business operations.

From the web console you can apply thresholds to critical components that, if breached, will cause alerts to be issued. NPE

applies default thresholds to each managed system, but we found it simple to access these settings from the Events menu. For our managed servers we could set general thresholds for processor and memory utilisation, along with low disk space percentages, and system availability. These can be fine-tuned further from the separate Component Viewer, and using this we could set different low-disk-space thresholds on individual partitions for each server.

A good range of predefined reports are provided which are all easily accessible from the main web interface. Additionally, Entuity provides multiple reports for activity, administration, availability and inventory categories. There are over thirty to choose from, and after a report has been generated it can be viewed on-screen and exported to PDF, CSV, Excel and RTF formats.

EYE NPE looks well suited to mid-sized networks and hands administrators the tools they need to proactively manage their critical business resources. It is capable of providing a great deal of timely information about performance, problems and outages, and despite the level of sophistication we found it remarkably easy to deploy and use. **NC**

Product: EYE Network Professional Edition
Supplier: Entuity
Tel: 020 7444 4800
Web site: www.entuity.com
Price: £15,000 (\$22,500)