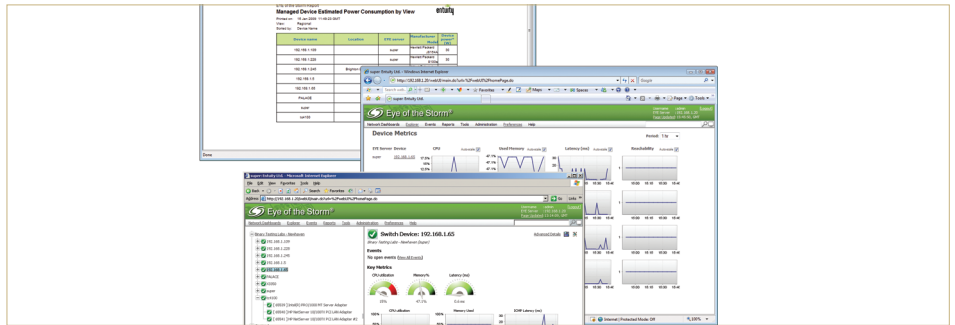


Eye Of The Storm 2009 from Entuity



PRODUCT REVIEW PRODUCT REVIEW PRODUCT REV

In these trying economic times, businesses need to get more out of their investment in IT, and part of this equation is effective management and monitoring of all network resources. Entuity's Eye Of The Storm (EYE) provides the tools to achieve these goals but it differs significantly from competing products, as it has simple deployment and ease of use as high priorities. Many network management products fall at the first post as they can be difficult to install, overly complex in operation, and fail to provide the means to make sense of the data that they are presenting. EYE avoids these pitfalls as although it is clearly capable of providing plenty of information about the network and associated devices, it offers facilities for customising reports that target different audiences.

EYE delivers network analysis and device monitoring, fault notification, problem remediation advice, and detailed inventory. This latest version (2009) goes a lot further, and the new Green IT Perspective feature makes EYE quite unique, as it can monitor system-wide power usage, allowing it to provide detailed reports, highlighting trends in workstation shutdowns and where wastage could be reduced. There's more, as the updated web browser interface allows you to manage and monitor distributed networks, and extensive use of hyperlinks makes it easier to drill down and view device specific information. Search facilities improve accessibility, allowing you to swiftly locate

attribute details on single and multiple devices. A new explorer tool aids event management as this can be configured to weed out extraneous information, so problems and faults that could impact Service Level Agreements are clearly highlighted.

Installation is swift and we had EYE up and running on a Windows Server 2003 R2 system in around fifteen minutes, after which you leave it to get on with network device discovery, which runs automatically and on demand. The new web interface is very smart and it opens with a dashboard, offering graphical overviews of entire networks accompanied by tables of events and warnings. Selecting a network view takes you to a list of all discovered devices within it, where you can drill down to see more details, such as real-time performance statistics. Along with a full network inventory, EYE also identifies how each device is interconnected, and it builds maps showing their relationships with each other.

For event notification EYE goes further than simple alerts, as it helps identify the root cause and the impact it's likely to have on operations. The Component Viewer is accessed directly from the web interface, where it provides even more detail on all discovered devices and applications. You can, for example, view all ports on a selected switch and pull up graphs showing real-time utilisation, faults, errors and traffic volumes.

Reporting addresses all areas including fault reporting and analysis, inventory and network utilisation. Report scheduling and automatic distribution are supported, and the Flex reports can be customised to present only relevant information.

The Green IT Perspective really makes EYE stand out as, after leaving it to gather power data for a reasonable period of time, it will advise on compliance with overnight workstation shutdown policies and how much you're saving in terms of power, hard cash and even your carbon footprint. It will also reveal which servers are sitting idle and switches where the number of unused ports is excessive, in turn making them possible candidates for consolidation.

Eye Of The Storm 2009 offers a network management solution that provides a clear insight into network performance and behaviour. It is capable of gathering a wealth of information about network devices and applications, and the new power monitoring and reporting features could prove invaluable for administrators who are tasked with making substantial reductions in operational costs. **NC**

Product: Eye Of The Storm 2009
Supplier: Entuity Ltd
Tel: 020 7444 4800
Web site: www.entuity.com
Price: Enterprise licensing starts from \$50,000