

Overview

The Eye of the Storm® (EYE) MPLS IP VPN module gives visibility to MPLS IP VPN configurations in the context of your overall network to reduce administrative complexity and improve overall network performance.

EYE MPLS IP VPN Module

Managing MPLS IP VPN as part of your Network

This module supports discovery of configured MPLS IP VPNs, providing detailed inventory and performance information. For example, port-level application of VRFs and the association between VRFs, route distinguishers and imported and exported route targets. Performance data is available at the virtual port level (corresponding to a VRF).

Checking Corporate Compliance

EYE collects inventory details suitable for generating reports that document your network's MPLS configuration. These VRF Infrastructure reports can assist you with enforcing conformance with corporate policies and compliance procedures.

Through Flex Reports you can create a report that includes details of port-level application of VRFs and the association between VRFs, route distinguishers and imported and exported route targets.

Enforcing Global Naming Policies

Global naming policies can allow all VRF names (and often their constituent route targets and route distinguishers) to be globally defined. Naming policies are useful tools for short cutting the identification of particular network devices and their purpose. However, these policies are easily subverted, either becoming so non-informative as to be worthless or worse misleading.

Through Flex Reports you can create a report that allows you to identify inconsistent naming. This Inconsistent VRF Name report allows you to identify on a per device and per interface basis where deviations from the convention require correction.

Estimating VPN Scale

For a network architect to assess the growth of your MPLS IP VPN infrastructure they need to know its current scale, and its level of utilization.

EYE provides detailed bandwidth and utilization for each VPN. You can report on how much traffic each VPN is contributing to the total and whether or not any of these VPNs are at capacity. The MPLS Port Summary report details for each interface:

- device name
- interface name
- bandwidth
- mean and peak inbound utilization
- mean and peak outbound utilization.

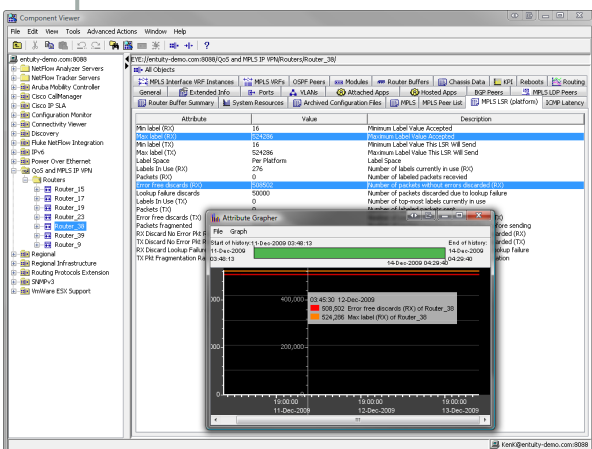
The report also includes a TopN panel for each interface graphing inbound and outbound utilization over the reporting period.

Fully Integrated within EYE

EYE MPLS VPN module is fully integrated within EYE. MPLS management information is available through Component Viewer, Flex Reports and an MPLS specific Essential Report. You can extend MPLS IP VPN functionality through complementary modules.

The EYE Cisco IOS IP SLA can provide, for example:

- details of availability failure within a VRF
- LSP traceroute
- IP SLA - Per VRF Performance
- availability and performance events.



Managing the MPLS IP VPN Infrastructure

When implemented with the Network Summary report you have a management level summary of

VPN Device Details

Printed on: 26 Aug 2009 11:19:54 EDT

Description: Inventory of devices participating in MPLS VPNs

View: Regional

Devices: 4

| Device name | VRF count |
|-------------|-----------|
| 192.168.1.8 | 12 |
| c2821 | 2 |
| h2821 | 2 |
| 127.0.0.1 | 5 |

MPLS VRF details for device 192.168.1.8

| VRF name | VRF route distinguisher | Active interfaces | Associated interfaces | Routes | Maximum routes | MPLS route targets |
|----------|-------------------------|-------------------|-----------------------|--------|----------------|--------------------|
| tc | 217:1001 | 2 | 2 | 1881 | 0 | 2 |
| cp | 217:1004 | 2 | 2 | 69 | 0 | 2 |
| cc | 217:1005 | 2 | 2 | 157 | 0 | 2 |
| voice | 217:1006 | 2 | 2 | 73 | 0 | 2 |
| ahc-1 | 217:10000 | 2 | 2 | 133 | 0 | 2 |
| cserv | 217:100 | 2 | 2 | 2342 | 0 | 1 |
| energy | 217:1009 | 2 | 2 | 91 | 0 | 2 |
| resnet | 217:1100 | 2 | 2 | 225 | 0 | 2 |
| auxsrv | 217:1008 | 2 | 2 | 106 | 0 | 2 |
| to-nsfw | 217:1003 | 2 | 2 | 41 | 0 | 2 |
| centsec | 217:5000 | 1 | 1 | 24 | 0 | 1 |
| wireless | 217:1007 | 2 | 2 | 143 | 0 | 2 |

MPLS route targets for device 192.168.1.8 VRF tc

| Route target | Type |
|--------------|--------|
| 217:1001 | Import |
| 217:101 | Import |

MPLS route targets for device 192.168.1.8 VRF cp

MPLS IP VPN Device Details

availability, utilization, utilization trend and applied IP SLA Operation data on a per interface basis.

Availability

The EYE MPLS IP VPN Module is an additionally licensed module. EYE is available on the Microsoft® Windows Server®, Sun™ Solaris™, Red Hat® Enterprise Linux®, and VMware® ESX Server.

Summary

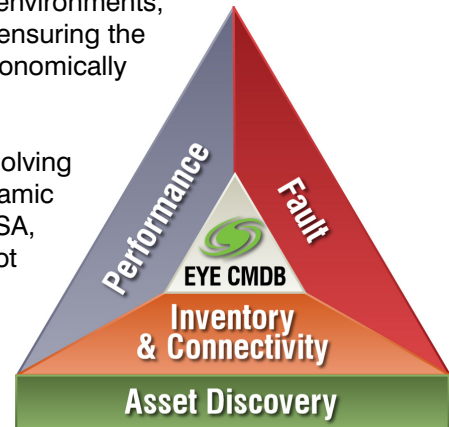
By illuminating MPLS IP VPN configuration details within the context of network device availability and performance, the EYE MPLS IP VPN module can identify overburdened interfaces to help improve performance and reduce administration. The EYE MPLS IP VPN module allows:

- monitoring of MPLS IP VPN configuration
- retention of polled readings for both interactive exploration and reporting purposes
- VPN performance interface report
- full integration with EYE, including other modules for example EYE Cisco IOS IP SLA.

Eye of the Storm Summary

Entuity offers a complete line of contemporary network management solutions for reducing operational costs while improving services delivery – affordable enterprise class management. Eye of the Storm® (EYE) network management solutions enable IT organizations to quickly and materially reduce costs, and to deliver - and prove - the service levels expected by its customers. EYE gives you insight, control, and predictability of your network's performance and availability - from the core to the edge - with a range of products at price points to match your business model. The EYE product line helps businesses realize the maximum benefit of today's distributed applications, virtualized environments, network-based services, and contemporary data sharing strategies by ensuring the foundational resource for all these initiatives – the network – is economically deployed and optimally performing.

Entuity's customers include Global 2000 companies proactively solving mission-critical business initiatives, leveraging complex and dynamic distributed network environments. A sampling includes: ABB, ACSA, Amtrak, Astra Zeneca, BMC Software, IBM Global Services, Perot Systems, The Royal Bank of Scotland, SASSA, Sony, Visteon, and WorldPay.



Eye of the Storm Enterprise Network Suite

EYE Enterprise Network Suite is the company's flagship scalable, multi-server solution for medium to large enterprises managing the largest and most dynamic networks for some of the most demanding organizations in the world. EYE Enterprise delivers network control and predictability enabling enterprises, system integrators and MSPs to manage network services and assets, meet service level commitments, implement best practices in service delivery, and even develop and monitor Green IT initiatives.

EYE automatically and continually discovers and captures in-depth network data and analytics, and provides integrated fault, device- and flow-based performance management capabilities that help enterprises, service providers, and system integrators reduce network downtime, commit to, deliver, assure and prove service levels, and ensure network configuration compliance. Real-time notifications of physical network and configuration changes, visibility to virtual servers and environments, and open data accessibility prevent user-impacting business service interruptions and enable transparent business-level reporting through high level and detailed reports, corporate dashboards, or mash-ups.

EYE NPE Integrated SME Network Suite

The Entuity Eye of the Storm Network Professional Edition (EYE NPE) is a new class of network management solution focused on the needs of small to medium enterprises (SMEs). It allows SMEs to manage their networks using enterprise-class technology at an affordable price. EYE NPE provides SMEs with a live, accurate view of their network in order to reduce network downtime and ensure optimal network operation so critical business initiatives can be effectively deployed and efficiently maintained.

EYE NPE provides a succinct suite of the most important functionality for network management, presented in an easy to use, quickly to deploy format. EYE NPE delivers extremely fast time to value and low total cost of ownership, resulting in superior overall price-performance. Its wide range of capabilities are the practical middle ground between single function point utilities and tools that are difficult and costly to integrate, and heavily laden frameworks that are difficult to deploy, learn, use, and expensive to support. EYE NPE enables SMEs to quickly and optimally manage their networks.

To learn more about EYE NPE for SMEs or Eye of the Storm Enterprise for medium and large enterprises, please contact your local Entuity office, visit www.entuity.com, or email info@entuity.com.



www.entuity.com

North American Headquarters

4 Mount Royal Avenue
Suite 240
Marlborough, MA 01752 USA
Toll Free: 1 800 926 5889
T: +1 508 357 6346
F: +1 508 357 6358

North American Regional

70-50 Austin Street
Suite 107
Forest Hills, NY 11375 USA
T: +1 718 261 3440
F: +1 718 261 3722

EMEA Headquarters

9a Devonshire Square
London, EC2M 4YN UK
T: +44 (0)20 7444 4800
F: +44 (0)20 7444 4808